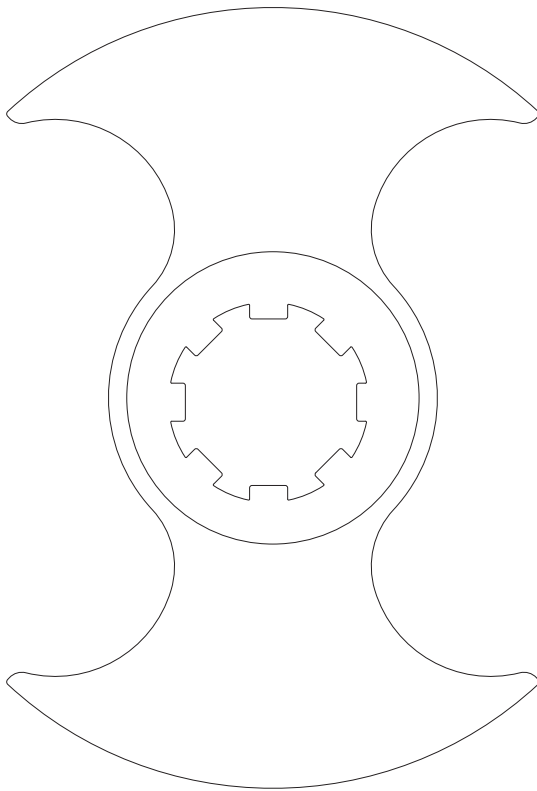




JEC - Always a Step Ahead

ROTARY POSITIVE DISPLACEMENT PUMPS JRZL SERIES



JEC
P U M P S

3IP

High Pride
Higher Performance
The Highest Quality



JEC Ltd. specializes in the field of sanitary pumps.

JEC was established in 1990 and started producing sanitary pumps utilizing precision cast and pressed parts for the first time in Korea. Since then JEC has been successfully supplying to the process industries centrifugal, rotary and self-priming pumps, as well as blenders. JEC pumps are now renowned for reliability both for general duties and special applications. JEC's success is built upon high quality manufacture and customer satisfaction. Our policy is one of long term vendor partnerships.

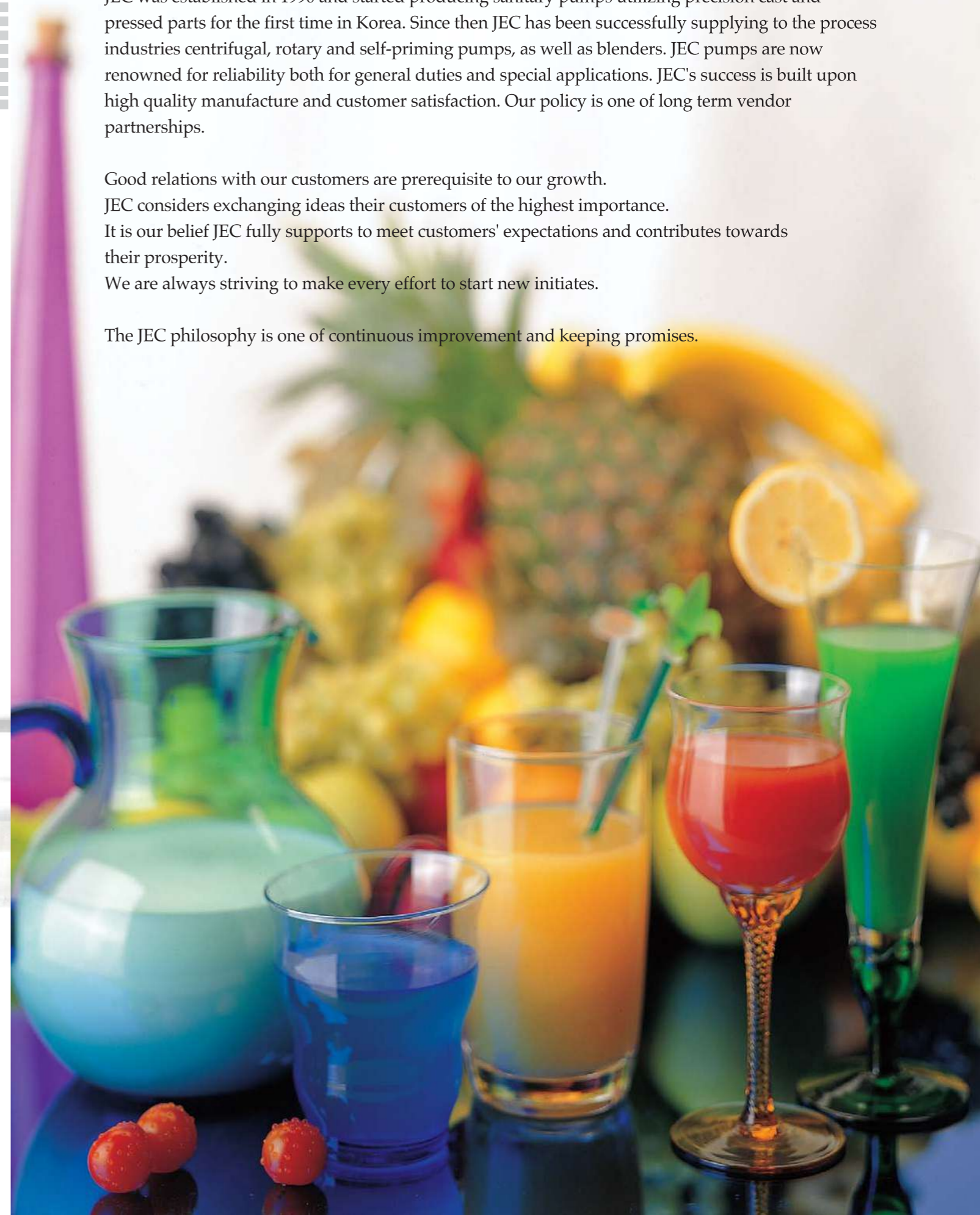
Good relations with our customers are prerequisite to our growth.

JEC considers exchanging ideas their customers of the highest importance.

It is our belief JEC fully supports to meet customers' expectations and contributes towards their prosperity.

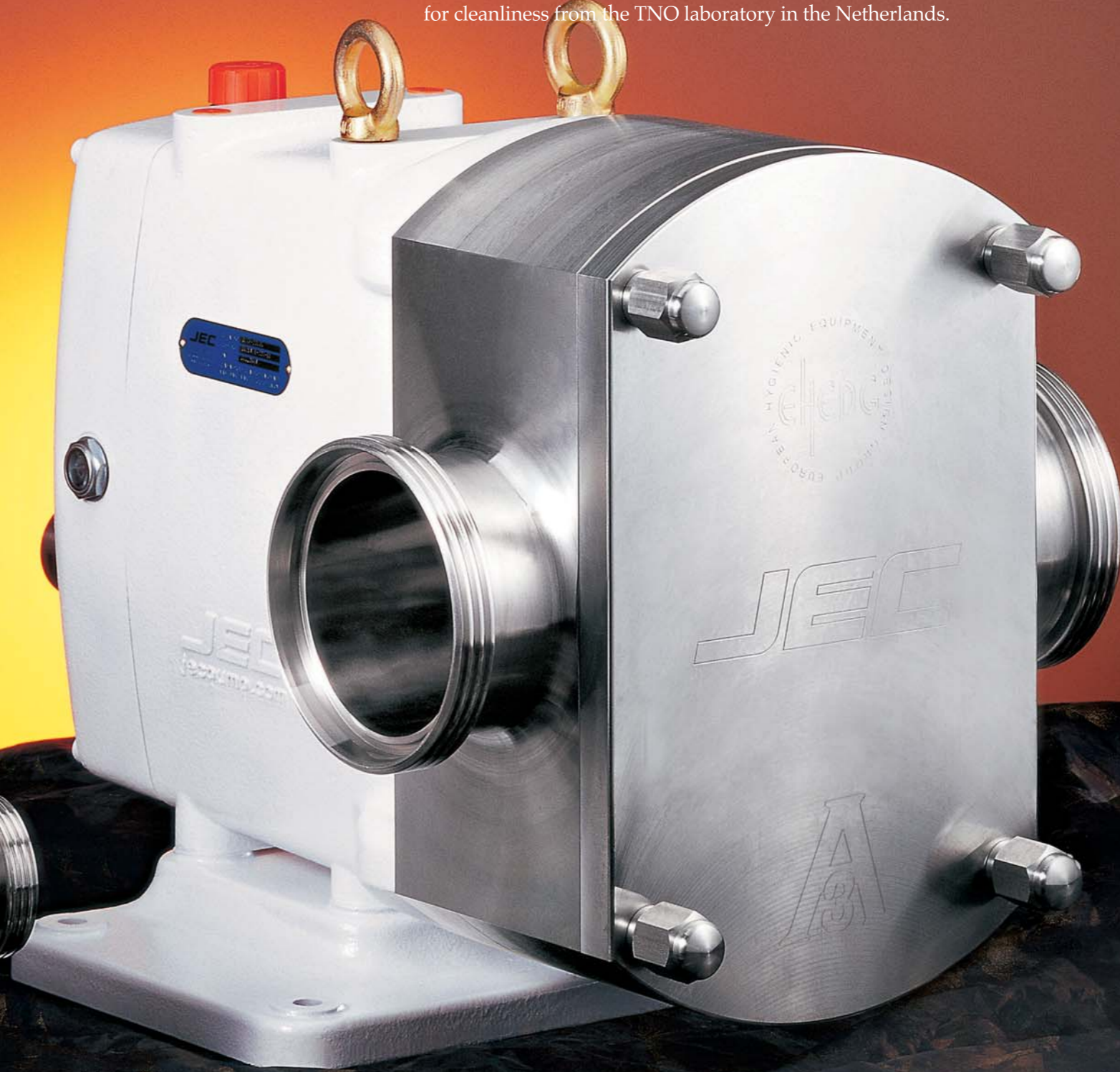
We are always striving to make every effort to start new initiatives.

The JEC philosophy is one of continuous improvement and keeping promises.



Our pride is created by high quality!

Every feature on the ZL range has been specifically designed to make dismantling (whether for inspection, cleaning, or maintenance) quicker, easier, and cheaper. What's more, the forward-seal position places the seals in direct contact with CIP fluids. Superior seal cleanliness lengthens seal life and minimizes seal flaking (product contamination). And because the seals are located directly behind the rotors, areas of product entrapment are eliminated for superior hygienic performance. In fact, the ZL has the EHEDG (European Hygienic Engineering & Design Group) certificate for cleanliness from the TNO laboratory in the Netherlands.



JRZL series Rotary Lobe Pumps

JEC - Always a Step Ahead

- The revolutionary, EHEDG (European Hygienic Engineering & Design Group) certified, JEC pump, manufactured in 316L stainless steel, the pump sets the standard for uptime reliability and CIP performance.
- Unique front-loading product seal positioning gives faster maintenance, easier cleaning, and less downtime. By removing only the front cover, both rotors and product seals can be fully accessed from the front of the pump without disconnecting the process line.
- Alternatively, a simple O-ring or PTFE Lip-seal can be supplied offering easy to change, low-cost options. All seal options listed fit into the same rotor case giving cost-effective changeability, even after the pump has been installed.
- Many applications require the pump head to be heated or cooled to assist in pumping the product, this is simple with the JEC JRZL series pump which can be fitted with rotor case thermal jackets or a front cover thermal jacket as required.
- To handle abrasive products, pump product contact internals can also be hardened.
- A high grade Ra<0.6/ μ m surface finish of the 316L type stainless steel pump head components is provided as standard. The Ra<0.4/ μ m finish can be provided optionally.
- There are truck pumps designed specially for road tanker use.

STANDARD DESIGN

- JEC JRZL series pumps are have four kinds of gear boxes with two kinds of rotor housings and will have lobe rotor.
- JEC JRZL series pumps are normally fitted with horizontal ports but simply are fitted with vertical ports.
- A single seal can be easily modified to a double type with a minimum of additional parts required due to its unique modular design.
- Complete connections according to optional standard ISO male, ISO clamp, SMS, DIN, BS and flange.

APPLICATION

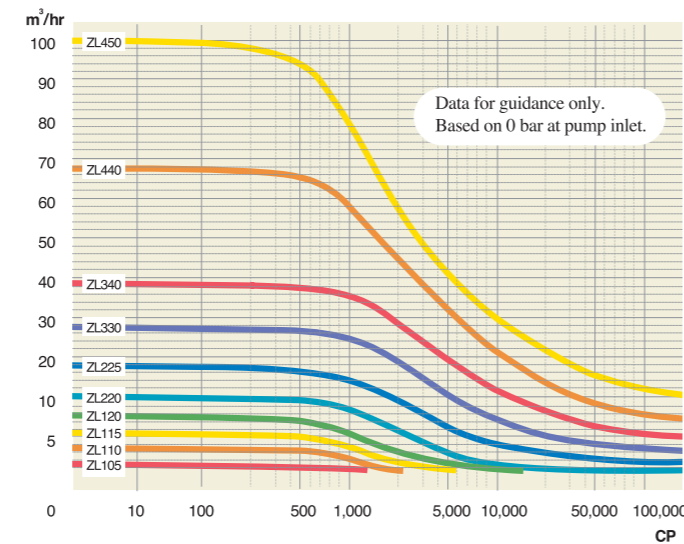
- JEC JRZL series pumps have been designed to suit all hygienic pumping applications found in the food, dairy, beverage, pharmaceutical and other places where stainless steel is resistant to the liquids to be pumped
- Both thin and viscous liquids up to 1,000,000 centipoise can be handled with a self-priming capability up to 4m, capacity range up to 100m³/hr and head up to 250m.

SPECIFICATIONS

| ZL Series | Model No. | Displacement | | | Standard Connection Size | | Max. Differential Pressure | | Max. Speed Rev / min |
|-----------|--------------|--------------|-----------------|----------------|--------------------------|--------|----------------------------|-----|-------------------------|
| | | Liters / rev | Int Gal /100rev | US Gal /100rev | mm | Inches | BAR | PSI | |
| 100 | ZL105-002-20 | 0,02 | 0,44 | 0,53 | 25 | 1 | 20 | 290 | 1000 |
| | ZL110-005-20 | 0,05 | 1,10 | 1,32 | 25 | 1 | 20 | 290 | 1000 |
| | ZL115-012-12 | 0,12 | 2,64 | 3,17 | 38 | 1,5 | 12 | 174 | 800 |
| | ZL120-021-08 | 0,21 | 4,61 | 5,54 | 50 | 2 | 8 | 116 | 800 |
| 200 | ZL220-040-12 | 0,40 | 8,80 | 10,56 | 50 | 2 | 12 | 174 | 700 |
| | ZL225-062-08 | 0,62 | 13,64 | 16,37 | 63 | 2,5 | 8 | 116 | 700 |
| 300 | ZL330-102-12 | 1,02 | 22,44 | 26,94 | 76 | 3 | 12 | 174 | 600 |
| | ZL340-144-08 | 1,44 | 31,68 | 38,04 | 100 | 4 | 8 | 116 | 600 |
| 400 | ZL440-227-12 | 2,27 | 49,93 | 59,96 | 100 | 4 | 12 | 174 | 500 |
| | ZL450-334-08 | 3,34 | 73,47 | 88,23 | 125 | 5 | 8 | 116 | 500 |

- The designed Bi-wing rotor geometry is maintained throughout the JRZL range of pumps giving high performance and key benefit of interchangeability with Single, Tri, Multi and Heli-Lobe rotors.

PERFORMANCE CURVE



*“The higher the precision
the longer the span of product life”*



Tri-Lobe Version

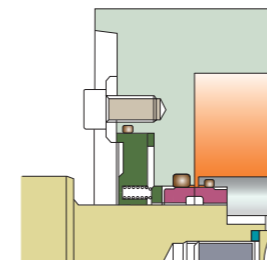


Ultra-Clean Version

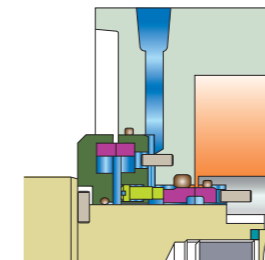


ZLF High Pressure & Thermal Jacket Version

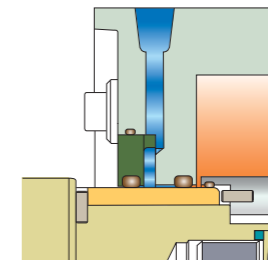
SEAL OPTIONS



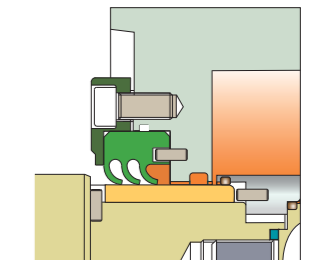
Single Mechanical Seal



Double Mechanical Seal



Double O-ring Seal



Lip Seal

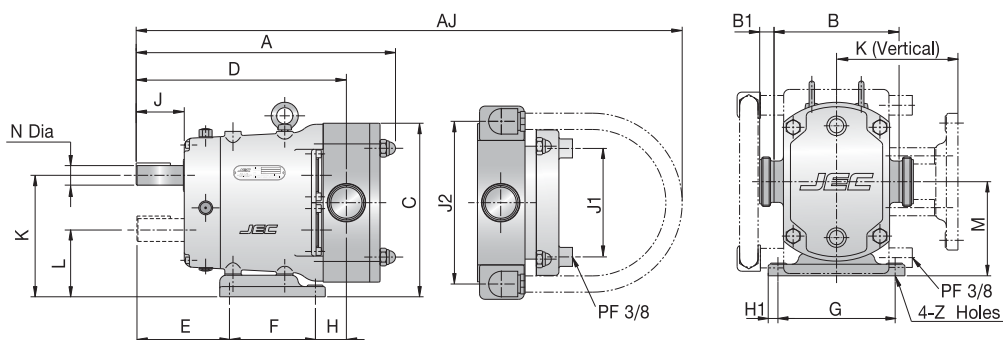


Our pride is created by high quality!

JEC Sanitary Pumps



“The reliable choice for your process”



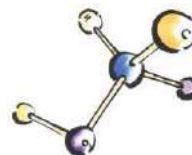
■ OUTLINE DIMENSION

| Model NO. | ports | Dimension | | | | | | | | | | | | | | | | | | | |
|----------------|-------|-----------|-----|-----|-----|-----|-----|-----|-----|----|----|-------|-------|-----|----|----|----|----|-----|-----|-----|
| | | A | B | C | D | E | F | G | H | H1 | J | K | L | M | N | X | Y | Z | AJ | J1 | J2 |
| JRZL105-002-20 | 1" | 264 | 152 | 198 | 219 | 96 | 84 | 134 | 39 | 12 | 47 | 141 | 77 | 109 | 22 | 34 | 8 | 9 | 425 | 122 | 180 |
| JRZL110-005-20 | 1" | 264 | 152 | 198 | 219 | 96 | 84 | 134 | 39 | 12 | 47 | 141 | 77 | 109 | 22 | 34 | 8 | 9 | 425 | 122 | 180 |
| JRZL115-012-12 | 1½" | 274 | 152 | 198 | 222 | 96 | 84 | 134 | 42 | 12 | 47 | 141 | 77 | 109 | 22 | 34 | 8 | 9 | 430 | 122 | 180 |
| JRZL120-021-08 | 2" | 290 | 152 | 198 | 229 | 96 | 84 | 134 | 49 | 12 | 47 | 141 | 77 | 109 | 22 | 34 | 8 | 9 | 440 | 122 | 180 |
| JRZL220-040-12 | 2" | 377 | 188 | 257 | 307 | 129 | 132 | 180 | 46 | 15 | 59 | 185 | 101 | 143 | 32 | 53 | 10 | 11 | 605 | 172 | 235 |
| JRZL225-062-08 | 2½" | 400 | 188 | 257 | 320 | 129 | 132 | 180 | 54 | 15 | 59 | 185 | 101 | 143 | 32 | 53 | 10 | 11 | 630 | 172 | 235 |
| JRZL330-102-12 | 3" | 475 | 242 | 344 | 389 | 154 | 160 | 242 | 75 | 22 | 70 | 243,5 | 128,5 | 186 | 45 | 57 | 14 | 13 | 720 | 246 | 308 |
| JRZL340-144-08 | 4" | 500 | 242 | 344 | 402 | 154 | 160 | 242 | 88 | 22 | 70 | 243,5 | 128,5 | 186 | 45 | 57 | 14 | 13 | 744 | 246 | 308 |
| JRZL440-227-12 | 4" | 620 | 324 | 458 | 505 | 198 | 210 | 320 | 97 | 30 | 80 | 324 | 170 | 247 | 55 | 67 | 14 | 15 | 830 | 358 | 420 |
| JRZL450-334-08 | 5" | 655 | 324 | 458 | 522 | 198 | 210 | 320 | 121 | 30 | 80 | 324 | 170 | 247 | 55 | 67 | 14 | 15 | 896 | 358 | 420 |



■ PORT SIZE & WEIGHT

| Model NO. | ports | CLAMP | IDF | Dimension B1 | | | | FLANGE | Weight KG | Volume CBM |
|----------------|-------|-------|-----|--------------|-----|-----|--------|--------|--------------|---------------|
| | | | | BS | DIN | SMS | FLANGE | | | |
| JRZL105-002-20 | 1" | 20 | 25 | 26 | 25 | 28 | 30 | 17 | 0,01 | |
| JRZL110-005-20 | 1" | 20 | 25 | 26 | 30 | 28 | 30 | 17 | 0,01 | |
| JRZL115-012-12 | 1½" | 20 | 25 | 26 | 30 | 20 | 30 | 19 | 0,01 | |
| JRZL120-021-08 | 2" | 22 | 27 | 26 | 30 | 22 | 30 | 20 | 0,01 | |
| JRZL220-040-12 | 2" | 22 | 27 | 26 | 30 | 22 | 30 | 42 | 0,03 | |
| JRZL225-062-08 | 2½" | 26 | 26 | 26 | 37 | 26 | 35 | 48 | 0,03 | |
| JRZL330-102-12 | 3" | 28 | 28 | 26 | 42 | 28 | 40 | 94 | 0,06 | |
| JRZL340-144-08 | 4" | 28 | 28 | 26 | 45 | 35 | 54 | 103 | 0,06 | |
| JRZL440-227-12 | 4" | 28 | 28 | 26 | 45 | 35 | 54 | 225 | 0,15 | |
| JRZL450-334-08 | 5" | 30 | - | 26 | 46 | 35 | 54 | 250 | 0,15 | |



VSP COMPONENTI PER INDUSTRIA ALIMENTARE E FARMACEUTICA

☎ 0331 / 13.51.403
0331 / 15.86.028

✉ vsp-italia@libero.it

🌐 www.pompealimentari.it